



LAW ENFORCEMENT

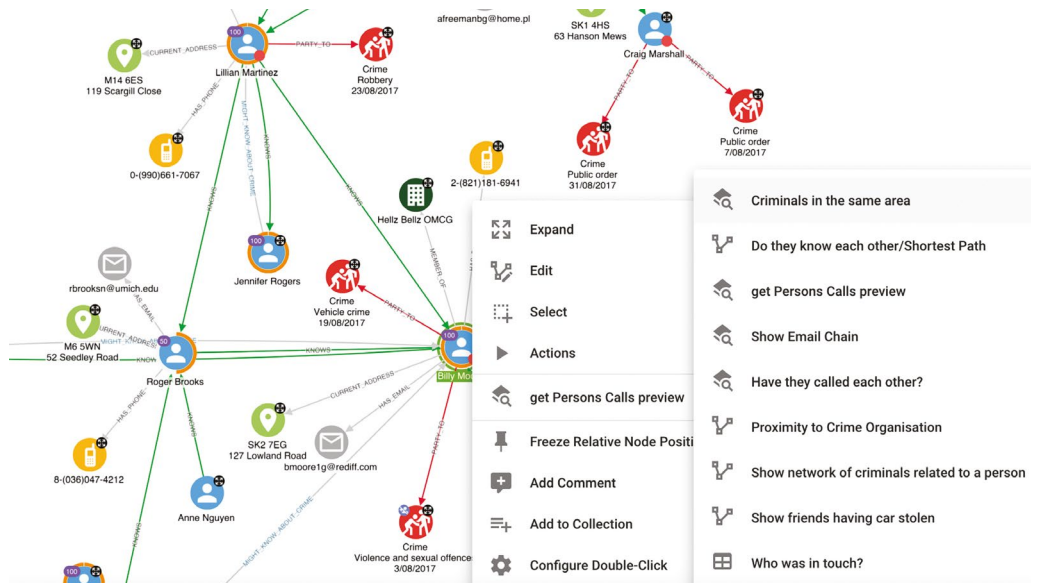
FASTER CRIMINAL INTELLIGENCE ANALYSIS

Discover Hume, the cutting-edge, graph-native intelligence platform designed for law enforcement analysts.

Overview

Hume introduces the third generation of link analysis for law enforcement. Link analysis started with the modest cork board, progressed to the analysts' workbench, and now, with Hume, is finally graph-native.

On a single canvas, analysts can effortlessly uncover connections between entities across previously siloed datasets, grasp geographical and temporal contexts, and perform advanced network analysis. By receiving automated alerts about patterns of interest, intelligence analysts are empowered to prevent, disrupt, and resolve crimes within hours, rather than days. Hume's direct graph editing capabilities allow analysts to create customized, high-fidelity representations of complex data, further enhancing their ability to discover crucial insights.



Key Benefits

- Enable each of your intelligence analysts, investigators, and frontline officers to access connected data easily
- Efficiently and effectively identify, locate, and associate entities of interest
- Create a single view of intelligence across your data silos
- Perform powerful link analysis and graph data science
- Eliminate manual work by presenting the right data in the right form on an easy-to-use platform.



THE SYSTEM HAS INSTANTANEOUSLY PRODUCED RESULTS THAT WOULD HAVE TAKEN A HUMAN A SIGNIFICANT AMOUNT OF TIME TO CONDUCT MANUAL ANALYSIS, AND IN SOME CASES IDENTIFIED LINKS THAT WOULD HAVE UNLIKELY BEEN IDENTIFIED AT ALL.”

**SENIOR TACTICAL INTELLIGENCE ANALYST,
WESTERN AUSTRALIAN POLICE FORCE**

Intelligence Analysis with Hume

Single View of Intelligence

Seamless integration of various structured and unstructured siloed data sources into a connected graph enables much deeper and quicker data understanding and interpretation.

Geospatial & Temporal Analysis

Assess the location, timing, and evolution of criminal activities and networks using Hume's advanced geospatial and temporal capabilities.

Graph Editing

Collaborate on visual representations of complex data by easily adding newly discovered information directly to the graph.

Powerful Graph Analysis

Examine entities of interest and their connections to individuals, objects, locations, and events through sophisticated graph data science techniques, enhancing understanding of criminal networks.

Automated Tasks

Perform pattern-of-life, the flow of funds, and other custom intelligence analyses at the click of a button, streamlining common tasks.

Alerting

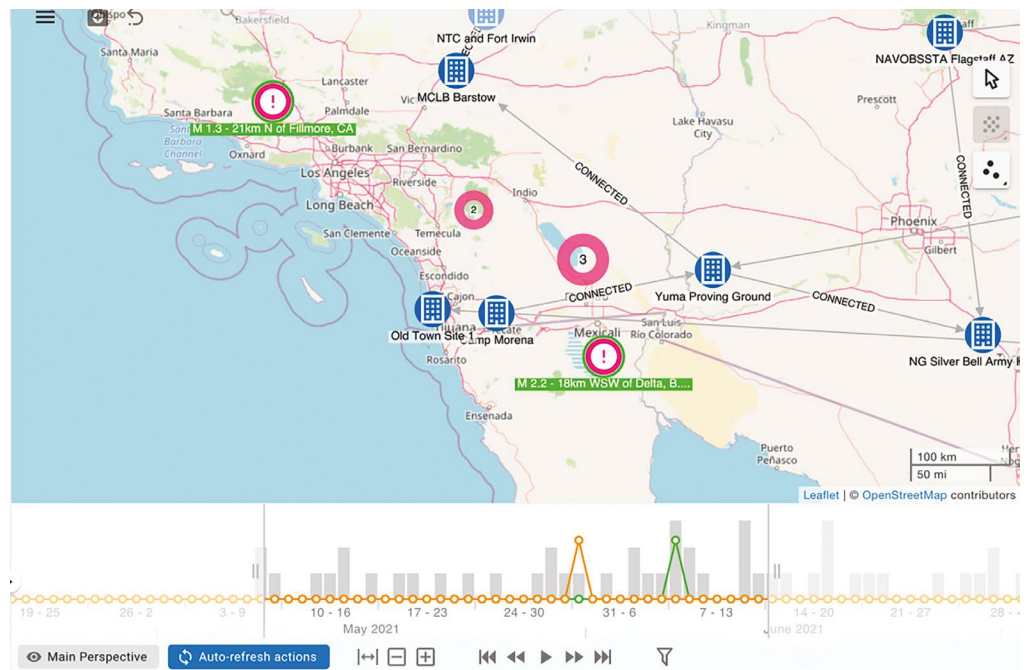
Detect and identify patterns of interest in your data and receive timely alerts when they emerge.

Data Science Integration

Equip your data science teams with the necessary tools to harness unstructured data processing, graph data science, and machine learning, enriching the information provided to your analysts.

Collaboration

Foster collaboration and knowledge sharing among internal and external intelligence teams, promoting informed decision-making.



About GraphAware

About Hume

GraphAware's expertise and thought leadership in graph technologies have consistently delivered exceptional value to intelligence agencies worldwide. Boasting a decade of practical experience in deploying and integrating graph intelligence solutions, we are a trusted partner to numerous law enforcement and intelligence agencies across the globe.

As the world becomes increasingly interconnected, so too does the data representing it. Traditional intelligence systems often make connected data analysis laborious, time-consuming, and resource-intensive. Hume was developed with the aim of streamlining and enhancing criminal intelligence processes through robust graph capabilities. Intelligence analysts around the world now rely on Hume to identify, locate, and disrupt criminal activities.